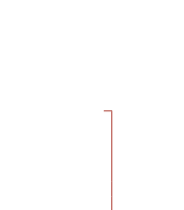




MOTORCYCLE BLUETOOTH® COMMUNICATION SYSTEM



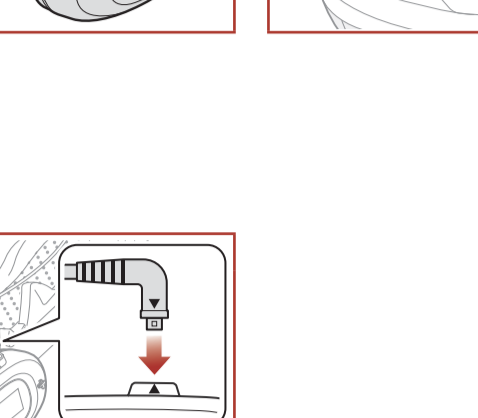
QUICK START GUIDE

1.0.0

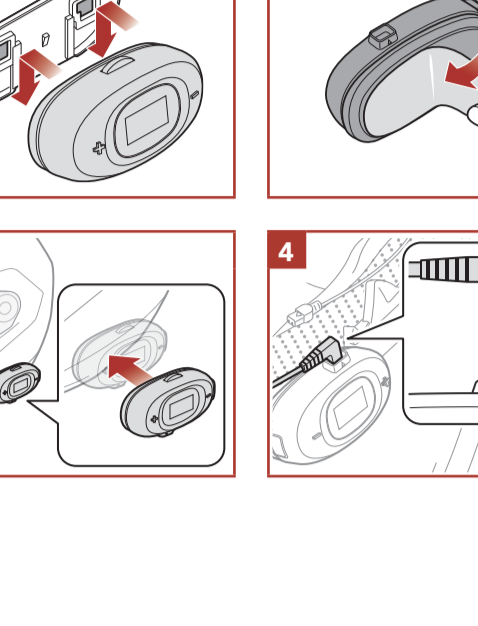
ENGLISH

Downloadable Sena Software

Download the **SENA MOTORCYCLES App** on **Google Play Store** or **App Store**.



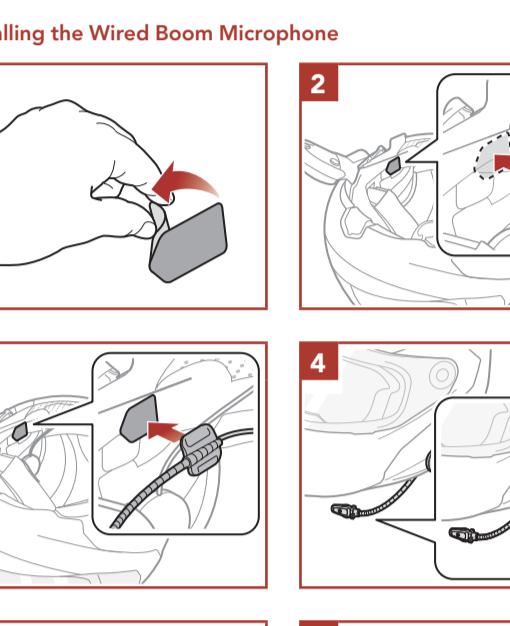
Download the following items at **sena.com**.



Follow us on Facebook, YouTube, Twitter and Instagram to check the latest information and helpful tips.

SENA Technologies, Inc. Customer Support: [sena.com](http://sena.com)

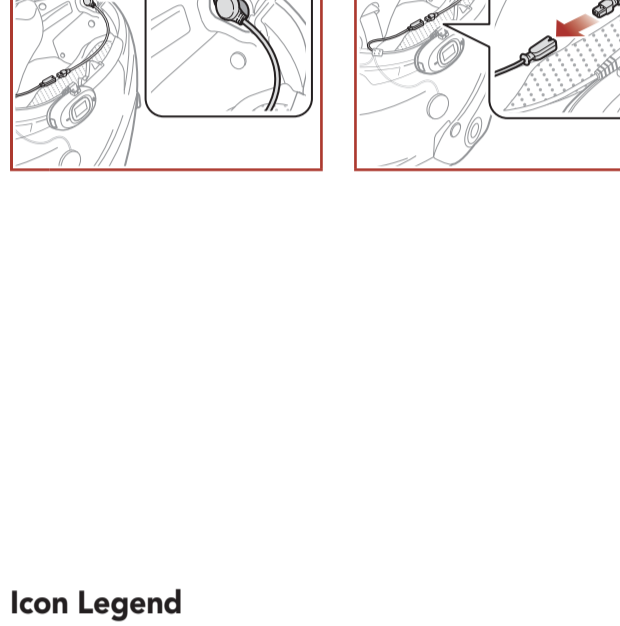
Product Details



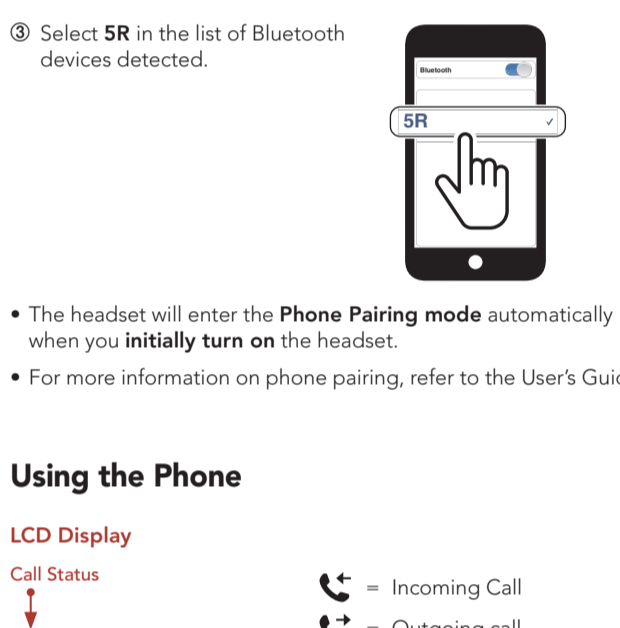
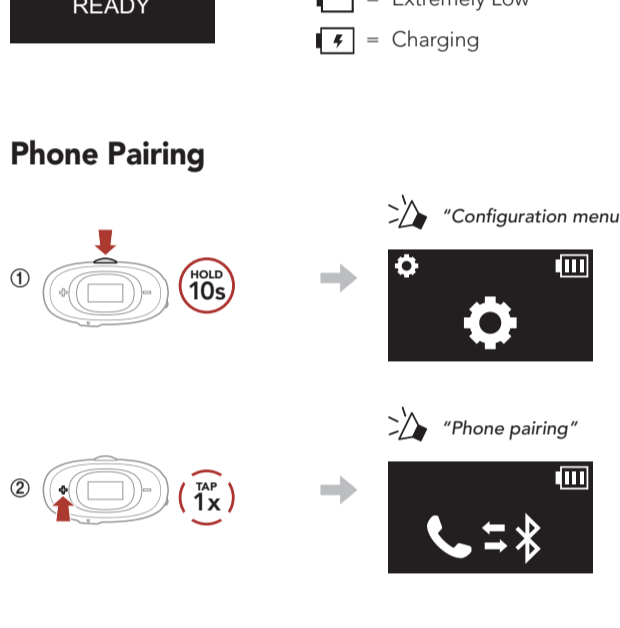
Installation

For more information about installation, refer to the User's Guide.

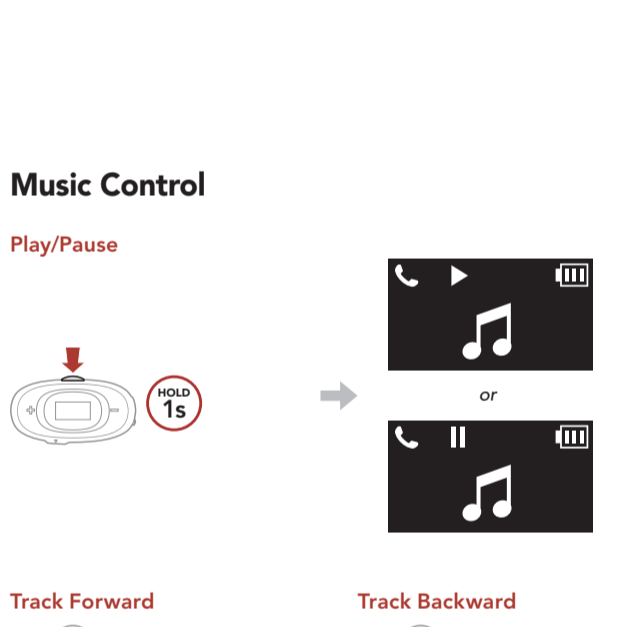
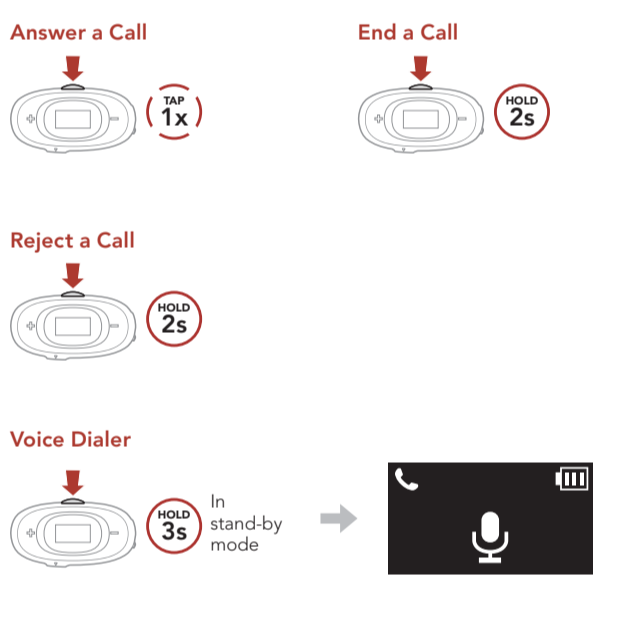
Using the Clamp for Headset Main Unit



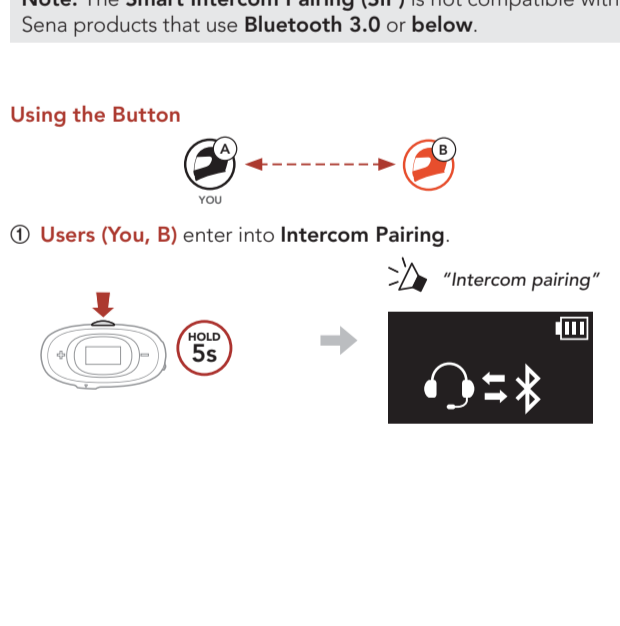
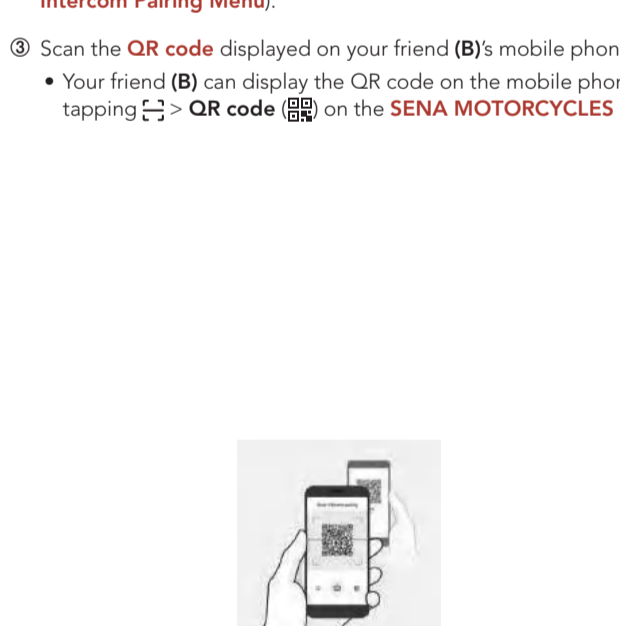
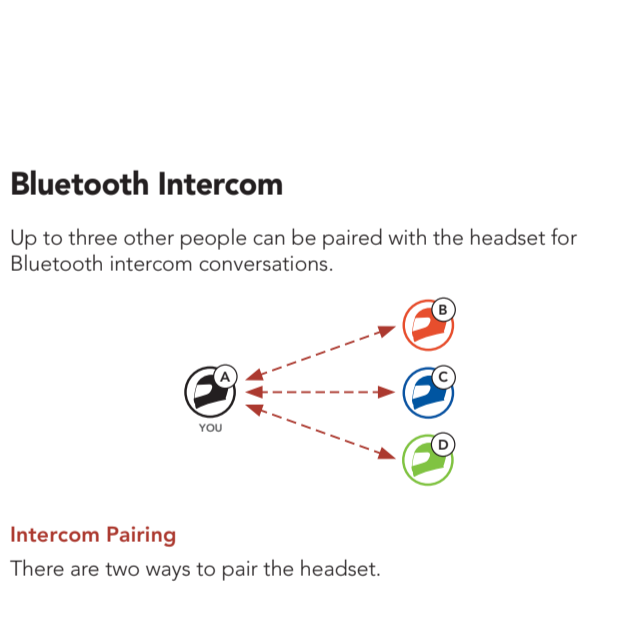
Using the Glued Surface Mounting Adapter for Headset Main Unit



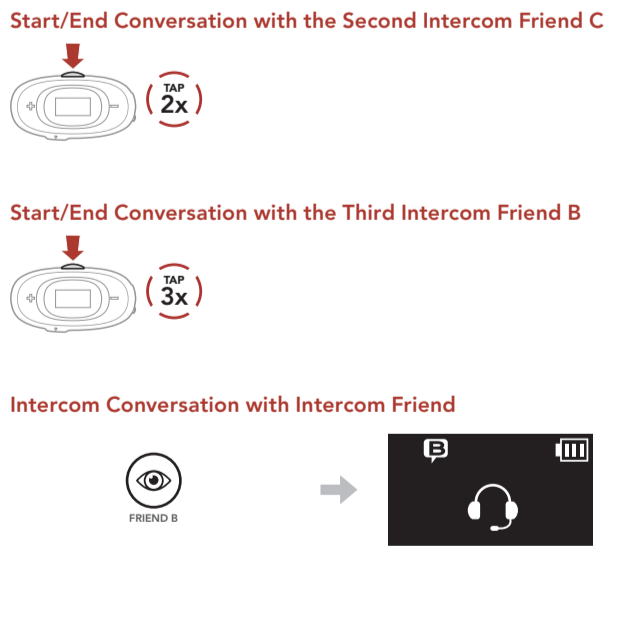
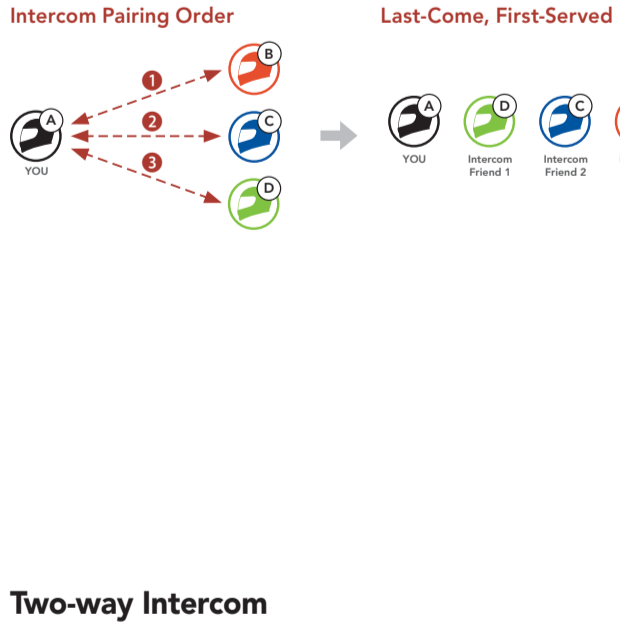
Installing the Speakers



Installing the Wired Boom Microphone



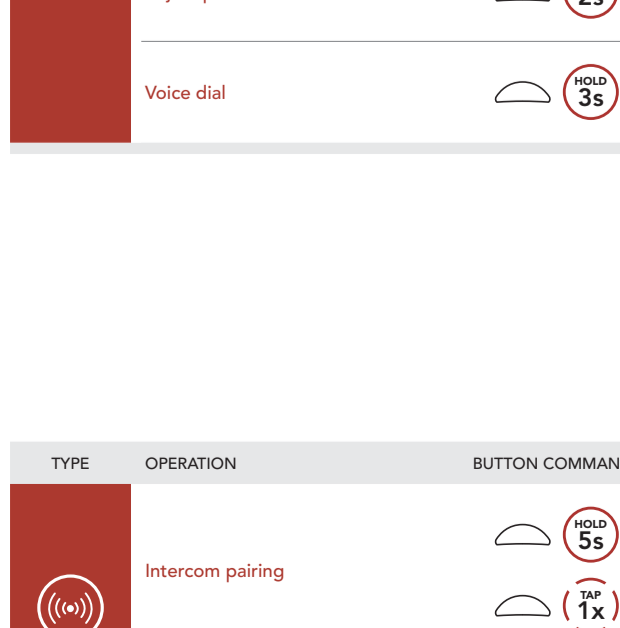
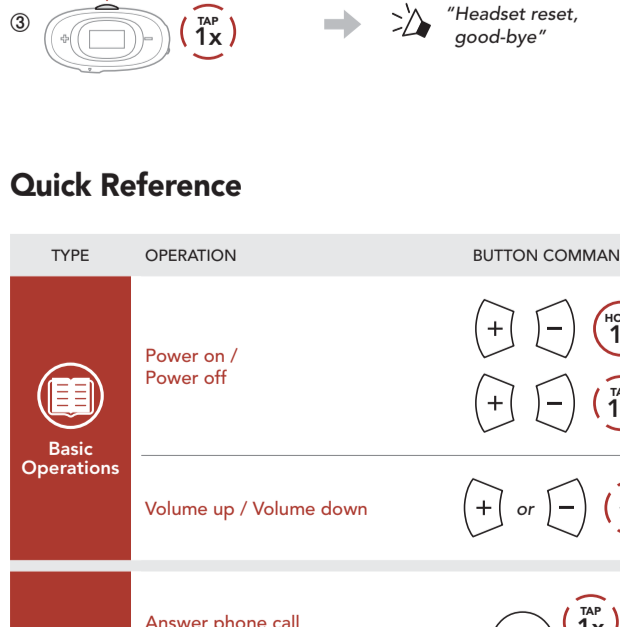
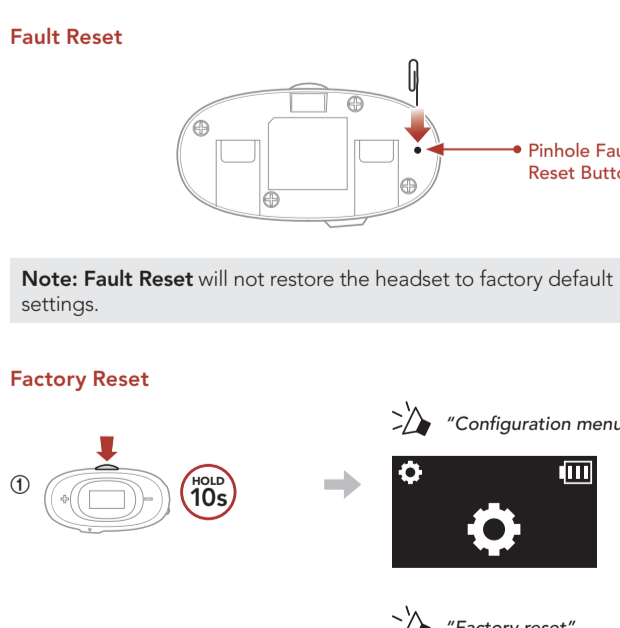
Installing the Wired Microphone



Icon Legend

- TAP 1x**: Tap button the specified number of times
- HOLD 10s**: Press and Hold button for the specified amount of time
- : "Hello" Audible prompt

Basic Operations



Checking the Battery Level



Phone Pairing



- The headset will enter the **Phone Pairing mode** automatically when you **initially turn on** the headset.
- For more information on phone pairing, refer to the User's Guide.

Using the Phone



Music Control



Bluetooth Intercom

Up to three other people can be paired with the headset for Bluetooth intercom conversations.



Intercom Pairing

There are two ways to pair the headset.

Using the Smart Intercom Pairing (SIP)

SIP allows you to quickly pair with your friends for intercom communication by scanning the QR code on the mobile phone by tapping **Smart Intercom Pairing** on the **SENA MOTORCYCLES App** without remembering the button operation.

- Pair the mobile phone with the headset.
- Open the **SENA MOTORCYCLES App** and tap **Smart Intercom Pairing**.
- Scan the **QR code** displayed on your friend (B)'s mobile phone.
  - Your friend (B) can display the QR code on the mobile phone by tapping **QR code** on the **SENA MOTORCYCLES App**.



- Tap **Save** and check that your friend (B) is paired with you (A) correctly.
- Tap **Scan** and repeat steps 3-4 to pair with **Intercom Friends** (C) and (D).

**Note:** The Smart Intercom Pairing (SIP) is not compatible with Sena products that use **Bluetooth 3.0 or below**.

Using the Button

Users (You, B) enter into **Intercom Pairing**.



Repeat the steps above to pair with **other headsets (C and D)**.

Last-Come, First-Served

If the headset has multiple paired headsets for intercom conversations, the last paired headset is set as the **First Intercom Friend**.

Intercom Pairing Order



Two-way Intercom

Start/End Conversation with the First Intercom Friend D



Intercom Conversation with Intercom Friend



Configuration Menu

Accessing the Configuration Menu



Navigating Between Menu Options



Execute Menu Options



Troubleshooting

Fault Reset



**Note:** **Fault Reset** will not restore the headset to factory default settings.

Factory Reset



Quick Reference

TYPE	OPERATION	BUTTON COMMANDS
Basic Operations	Power on / Power off	+ - HOLD 1s + - TAP 1x
	Volume up / Volume down	+ or - TAP 1x
Mobile Phone	Answer phone call	☎ TAP 1x
	End phone call	☎ HOLD 2s
	Reject phone call	☎ HOLD 2s
	Voice dial	☎ HOLD 3s

TYPE	OPERATION	BUTTON COMMANDS
Intercom	Intercom pairing	☎ HOLD 5s ☎ TAP 1x
	Start/End intercom	☎ TAP 1x

TYPE	OPERATION	BUTTON COMMANDS
Music	Play/Pause music	☎ HOLD 1s
	Track forward	+ HOLD 1s
	Track backward	- HOLD 1s